

130 HOUSE

130 OLD STREET EC1

Up to 21,721 sq ft of remodelled office space in the heart of Tech City



130 HOUSE

REMODELLED FOR BUSINESS

This prominent and expansive building is currently undergoing a complete refurbishment, soon to offer up to 21,721 sq ft of brand-new office space, with fitted options available. Finished to the highest standards with a contemporary aesthetic, the building will feature a redesigned arrival experience, an impressive roof terrace possessing desirable views, and premium end-of-trip facilities.





- 7 ORBIX LONDON
- 6 EASTVAULT
- 5 GRAVITA
- 4 QUANTYX
- 3 BLUEWELL
- 2 CLIMMR
- 1 EDGEPOINT
- 6 VELOURA





AVAILABILITY

FLOOR	FIT-OUT	SQ FT	SQ M	TERRACE (SQ FT)
7th	CAT A	1,279	119	717
6th	CAT A	2,548	237	312
5th	CAT A	3,191	297	-
4th	CAT A	3,173	295	-
3rd	CAT A	3,491	324	-
2nd	CAT A	3,516	327	-
1st	CAT B	3,767	350	-
Ground	CAT A	756	70	166
TOTAL		21,721	2,019	1,195

HIGHLIGHTS



Prominent building on Old Street



High-quality finishes



EPC B+ BREEAM Excellent



New end-of-trip facilities



New arrival experience



Private terraces



Fully fitted options available



2x Passenger lifts



Managed packages available



Fibre connectivity

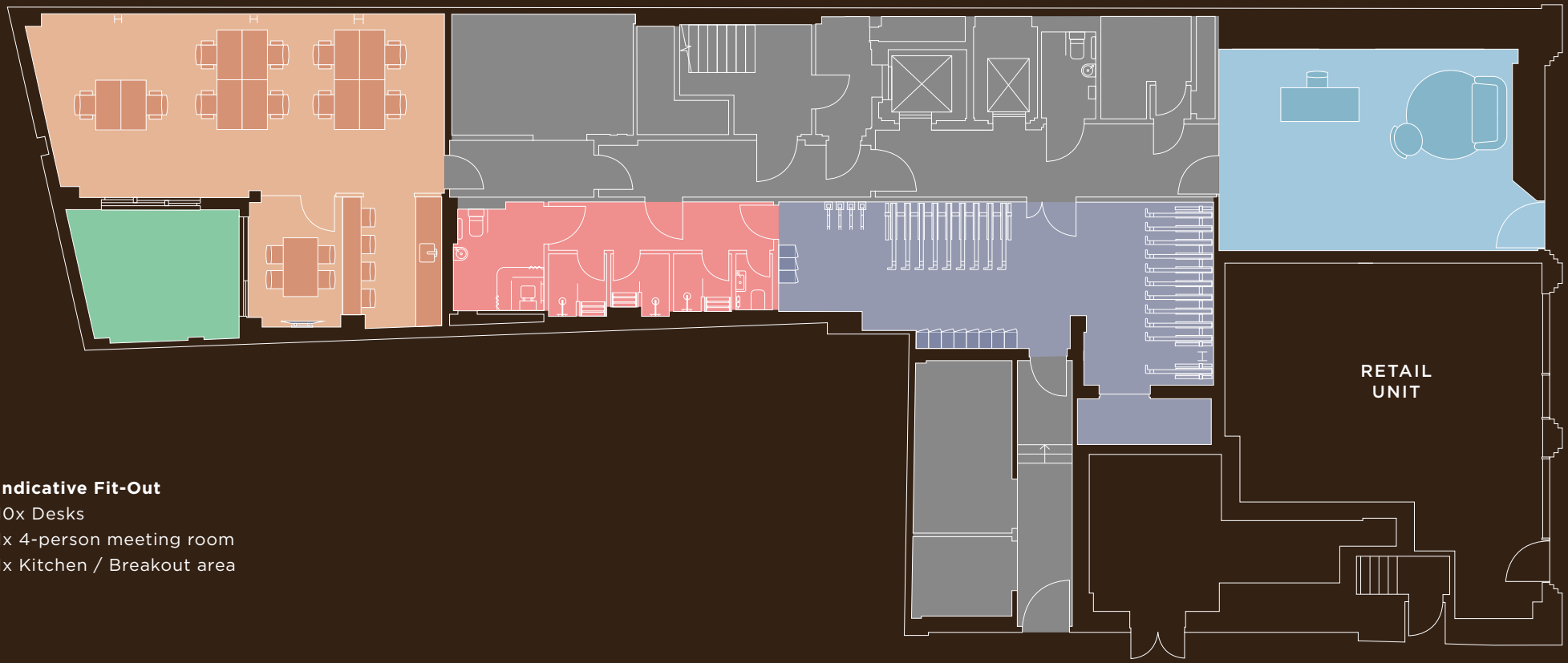


Typical office floor CGI with indicative fit-out



GROUND FLOOR PLAN

756 sq ft / 70 sq m



OLD STREET

Indicative Fit-Out

- 10x Desks
- 1x 4-person meeting room
- 1x Kitchen / Breakout area

Office space
 Showers
 Reception
 Bike storage
 Courtyard
 Core





TYPICAL FLOOR

3,767 sq ft / 350 sq m



Indicative Fit-Out

- 44x Desks
- 1x 10-person meeting room
- 1x 8-person meeting room
- 4x Collaboration areas
- 1x Welcome area
- 1x Kitchen
- 1x Breakout area

Office space
 Core
 Green roof

OLD STREET



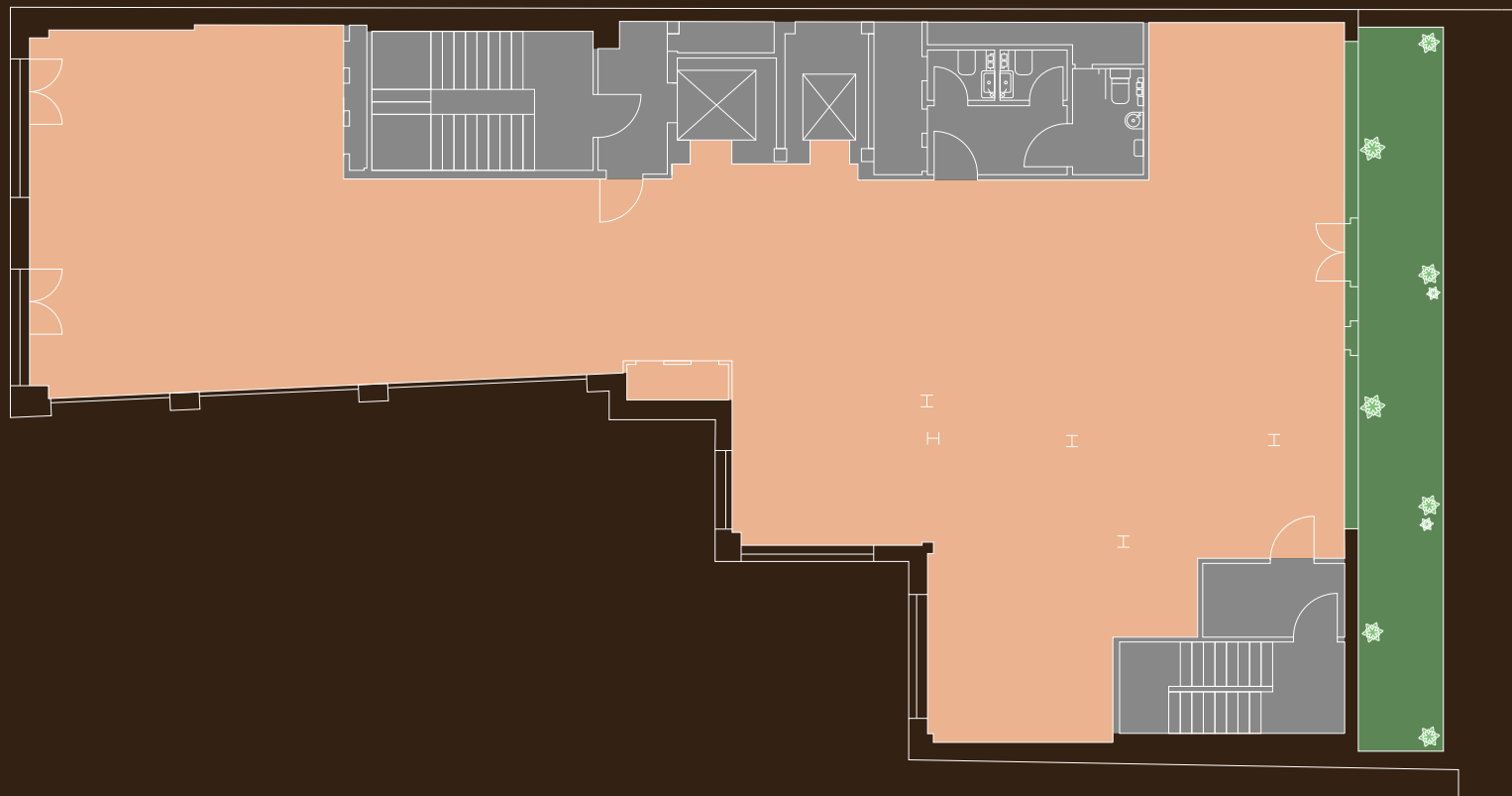


6TH FLOOR PLAN

2,548 sq ft / 237 sq m

Terrace

312 sq ft / 29 sq m



OLD STREET

Office space Core Terrace

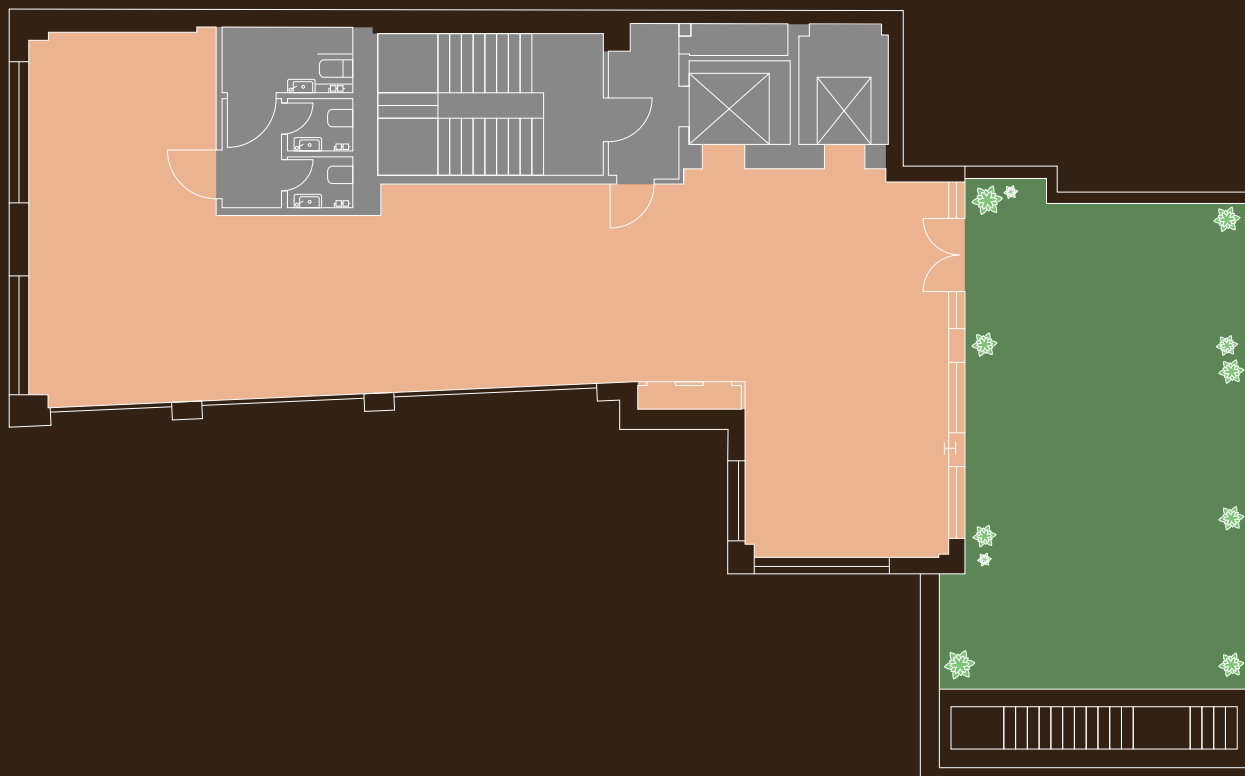




7TH FLOOR PLAN

1,279 sq ft / 119 sq m

Terrace
717 sq ft / 66.6 sq m



Office space Core Terrace

OLD STREET





Roof terrace CGI with view towards Old Street roundabout



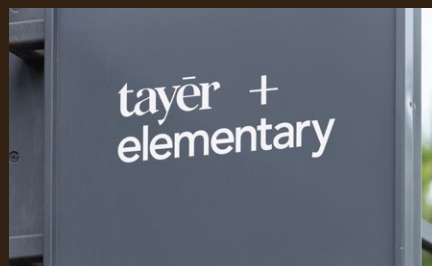
130 HOUSE



Whitecross Street Market



OLD STREET STATION



tayer + elementary



Hoxton Square



VIBRANT SHOREDITCH

Located in the heart of Shoreditch and just moments from Old Street Station, this building offers an exceptional position within one of London's most dynamic neighbourhoods. There is a wide range of amenities, including an array of restaurants, cafés, street food markets, boutique shops, and bars — ideal for both business and leisure.

Old Street Station is just a 4-minute walk away, providing access to the Northern Line and National Rail services. The Elizabeth Line at Moorgate Station is also within easy reach, just a 13-minute walk, offering fast and direct connections across London.



Leonard Street Market



AMENITIES

RESTAURANTS

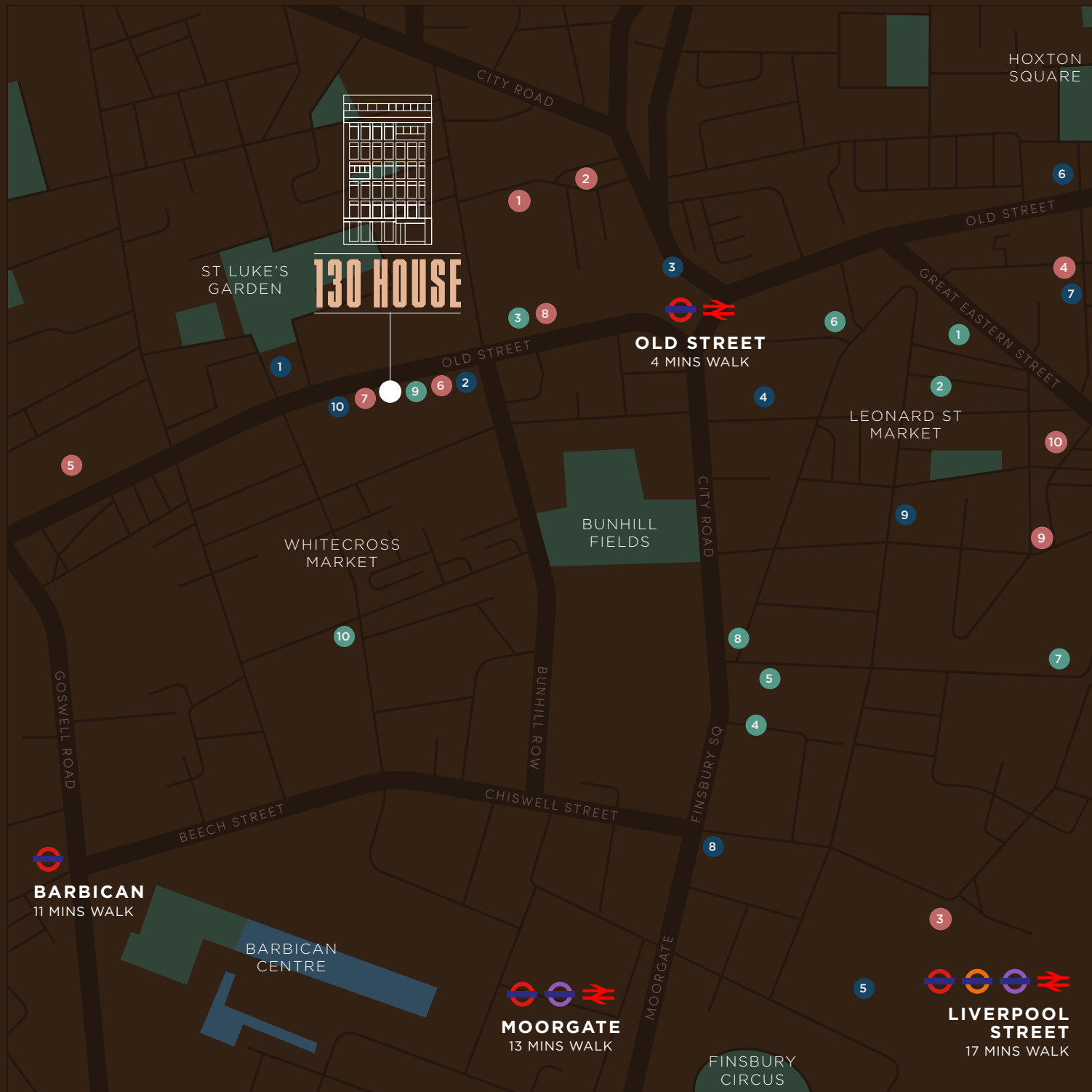
- 1 Bone Daddies
- 2 Honest Burger
- 3 Yauatcha
- 4 Blacklock
- 5 Fare
- 6 Officina OO
- 7 Pasta Nostra
- 8 Wagamama
- 9 Padella
- 10 Bistro Freddie

CAFÉS

- 1 A Pinch of Salt
- 2 Trade
- 3 Grind
- 4 Ozone
- 5 Beany Green
- 6 Artist Café
- 7 FWD: Coffee
- 8 Blank Street
- 9 Alchemy Café
- 10 Blooms & Beans

LEISURE/HOTELS

- 1 The Hoxton Hotel
- 2 Nobu Hotel
- 3 Gymbox
- 4 Barry's Bootcamp
- 5 Flight Club
- 6 XOYO
- 7 Queen of Hoxton
- 8 Singer Tavern
- 9 Tayer + Elementary
- 10 The Two Brewers





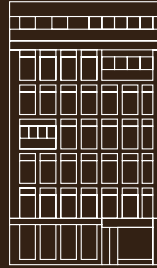
IN GOOD COMPANY

Drawing a dynamic mix of forward-thinking companies, from innovative tech start-ups to well-established financial institutions, making Shoreditch a vibrant and inspiring place to work.



SLAUGHTER AND MAY





130 HOUSE

130 OLD STREET EC1

Susskind.



RICHARD SUSSKIND

richard@susskind.london

07733 112 233

ADAM NOBLE

adam@susskind.london

07980 991 217

ALICE LOGAN

alice.logan@jll.com

07720 070 417

SIMON CROTTY

simon.crotty@jll.com

07826 947 267

ELLE WHAYMAN

elle@susskind.london

07791 785 253

NICK GOING

nick.going@jll.com

07756 500 466

Important notice relating to the Misrepresentation Act 1967 and the Property Misdescriptions Act 1991: (i) the particulars are set out as a general outline only for guidance of intending purchasers or lessees and do not constitute, nor constitute part of, an offer or contract (ii) all descriptions, dimensions, references to condition and necessary permission for use and occupation, and other details are given in good faith and are believed to be correct, but any intending purchasers or occupiers should not rely on them as statements or representations of fact, but must satisfy themselves by inspection or otherwise as to the correctness of each of them. March 2026